

Omni-Pro Software, Inc Internet Energy Systems, Inc.

Load Management
Advanced Automated Meter Reading
SCADA & Custom System Integration

MADE IN USA!

Jim Enga

President

Omni-Pro Software, Inc.

Email: omnipro@iw.net

605-270-2285

Omni-Pro Software develops technology that reduces energy costs and consumption



- Founded 1991
- Located Madison, SD and Fairfax, VA
- Technology currently used by ~30 municipal utility customers in SD, MN, IA, NE
- Partner Company Internet Energy Systems specializes in real-time monitoring of energy for commercial and industrial customers
- This is a South Dakota product, hardware is manufactured in Brookings, SD!

Load Management is the best method for a utility to reduce wholesale power costs



- We have specialized in software solutions for load management for over 20 years!
- Two options are available for LM
 - Comverge Technologies DCU2000
 - Effective one-way FM receiver
 - Low cost implementation
 - IES C31Gateway
 - Provides return status data
 - Provides automatic meter reading capability
 - Advanced TOU Appliance Management
- Commonly Controlled Loads
 - Electric Water Heaters
 - Central Air Conditioners
 - Electric Heat
 - Heat Pumps
 - Dual Fuel Control
 - Computer Power Settings
 - Customer Alerting During Peak Usage
 - Coincidental control of multiple utility systems

New technology is available to maximize your utilities' efficiency!

No competing technology can match these features!

This technology is available NOW!



- C3I Wireless Gateway Technology!

- Two-Way Verifiable Load Management
- Two-Way **Register** Meter Reading
- Electric, Water, and Gas Meters
- Site Diagnostic & Meter Tampering Information
- Remote Disconnect & Electricity Pre-Payment

- Data Directly Accessible From Master Station

- This is NOT walk-by or drive-by technology!

C3I-IP technology is now available for utilities with access to broadband TCP/IP networks!

Connectivity to cable modem, fiber optic , and WiMax networks!

Provides real time consumption, demand, and service quality information!

This technology is available NOW!



•C3I-IP Gateway Technology!

- Two-Way verifiable load management
- Two-Way **Register** meter reading (perfect accuracy & no calibration)
- Electric, water, and gas meters (Up to four meters per gateway!)
- Site diagnostic & meter tampering information
- Remote disconnect & electricity pre-payment
- Consumption reports sent directly to customers!

•Data Directly Accessible From Master Station

- This is NOT walk-by or drive-by technology!

Our vision is the coordinated power management of all electrical devices



- Why consider load management & advanced automated meter reading?
 - Direct ROI from reduced energy costs
 - Labor savings from advanced automated meter reading
 - Users become active participants in energy conservation
 - Utility receives increased status as environmentally sound
 - Reduced energy consumption = good for environment

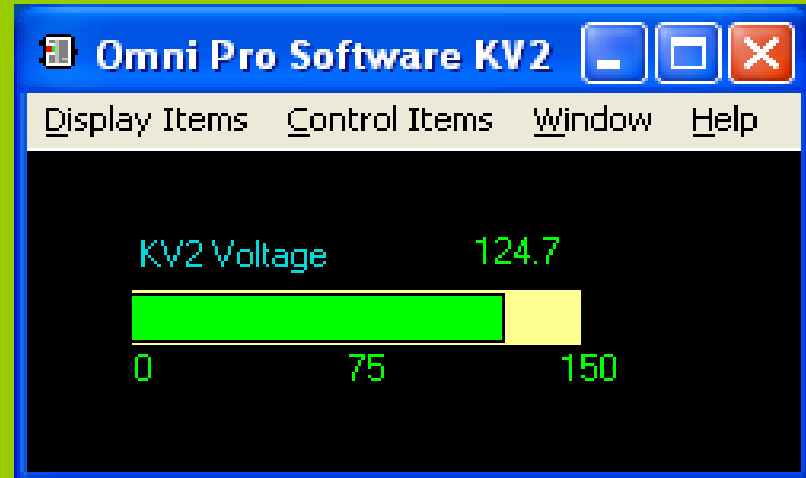
Customers value energy conservation and green technology, especially with increasing energy costs and environmental concerns



- Omni-Pro/IES technology provides features no competitor can competitively match
- C3I Wireless Gateway for residential & commercial
- C3I-IP Residential Gateway for residential & commercial
- C3I-IP Gateway devices for real-time data dissemination to larger customers concerned about their own consumption
 - View our demonstration at www.internetenergysystems.com

Customer Value Proposition:

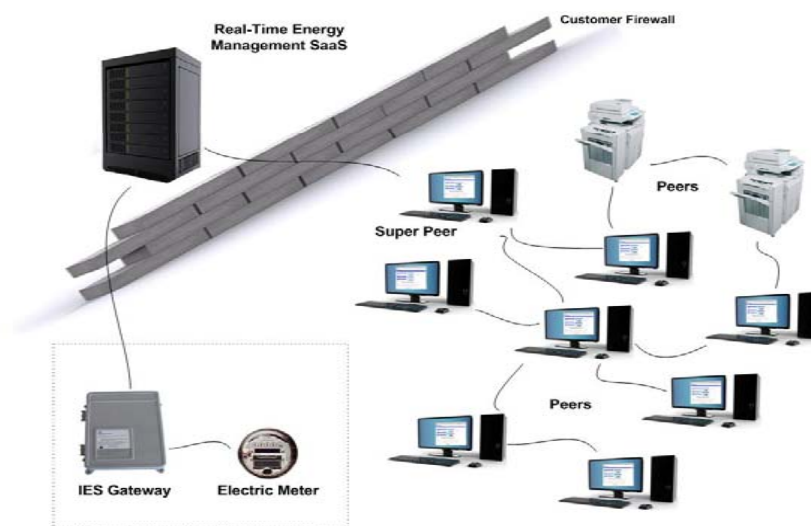
No other price competitive technology performs these AMR functions:



- Advanced Automated Register Meter Reading (AARMR)
 - GE I-210+ Series Electric Meters
 - Kwh Display Reading
 - Instantaneous Demand
 - Meter Site Diagnostics, Voltage, Tamper Flags, Service Cautions, Powerfail Count
 - TOU Register Reading & appliance management
 - Load Profiling
 - Remote Disconnect, Demand Limiting, Pre-Payment

Customer Value Proposition:

No other price competitive technology performs these load management functions:

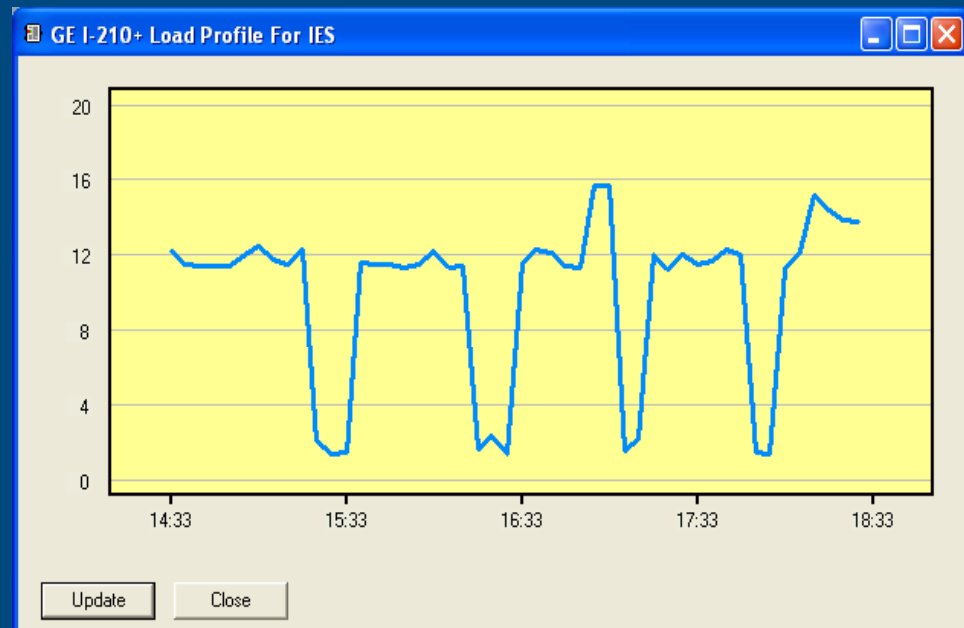


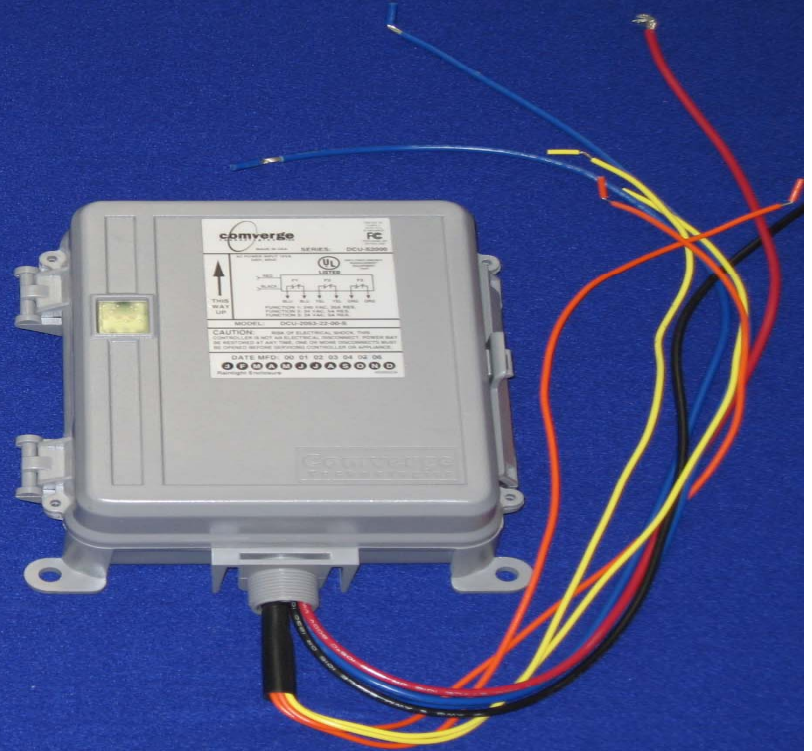
- Load Management with C3IGateway technology:
 - 3 addressable control points
 - Relay status verifiable from master computer
 - Cold load pickup times adjustable from master computer
 - Relay control effectiveness verification – Device knows if relay state change affected customer's load
 - Time clock control of individual load groups
 - Load profile graph instantly available for every customer – Visually inspect control effectiveness as it's occurring.
 - C3I-IP Gateway can text message customers energy usage reports and demand alerts!

Advanced Technology can determine problems in your service area!



- C3I Wireless Gateway Technology!
 - Instant access to last 4 hours of load profile
 - Can visualize appliance cycling and verify load control operations
 - 10 KW electric heat
 - 4 KW electric water heater





FM Load Management Components

Comverge Technologies DCU2000 system components include: FM transmitter, RTC1032, and DCU2000 receiver!

C3IGateway load management/advanced AMR system



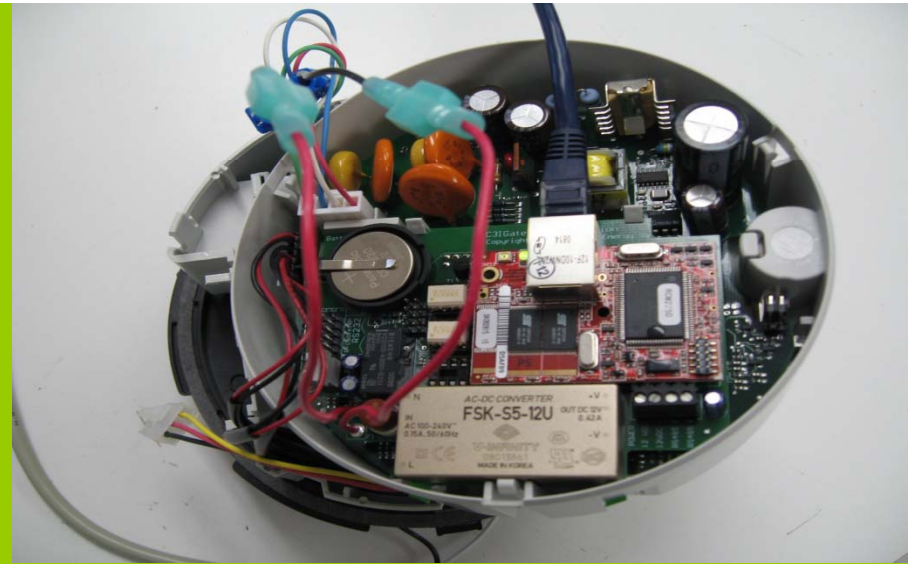
- Communication VIA FM digipeaters or TCP/IP
- GE I-210+ Electric Meter
 - Communications module provides RS485 to C3IGateway devices
 - Two I-210+ meters per C3IGateway are supported
 - Communications module provides power to C3IGateway
- Absolute Digital Encoder Devices
 - Electric Meters
 - Water Meters
 - Gas Meters

C3IGateway /Advanced WIFI AMR system



- Communication VIA TCP/IP
 - Existing Customer WIFI
 - WIMAX to WIFI networks
 - Programmable Consumption – Demand level text message alerts
- GE KV2C Electricity Meters
 - Installs in seconds
 - Metering Data
 - Diagnostic Data (Voltage, Current, Power Factor, etc.)
 - Load Profile & TOU Information
 - Demand Reset

C3I Gateway /Advanced Ethernet AMR system



- Communication VIA TCP/IP
 - Existing Customer LAN
 - Programmable Consumption Demand level text message alerts
- GE KV2C Electricity Meters
 - Metering Data
 - Diagnostic Data (Voltage, Current, Power Factor, etc.)
 - Load Profile & TOU Information
 - Demand Reset
- Absolute Digital Encoder (Water Meter Interface)

Solutions for your largest customers



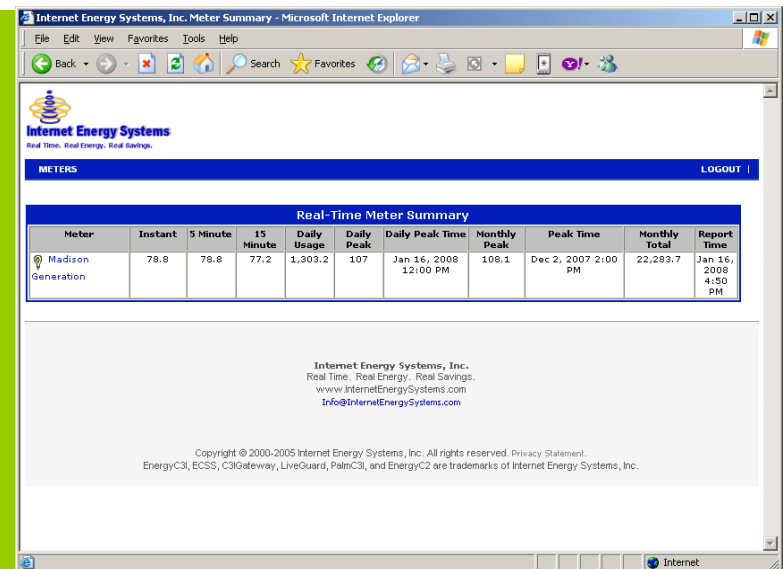
- We offer energy conservation tools for your customers!
 - You can't save energy if you don't know how much you're using at the time you're thinking about it
 - Hosted data center solutions provide cost-effective tool
 - Energy data updated every minute!
 - Kwh Energy
 - Demand
 - Power Factor
 - Site Diagnostic Information – Voltage & Current per phase
 - Active Demonstration at: www.internetenergysystems.com click Demonstration and envision how you can save energy!

Gateway device interfaces with meter and publishes data every minute to hosted energy management service



- Patent-pending technology for secure use on customer's network
- Supports DHCP for plug-n-play on customer's network
- Streams data to hosted service every minute
- Gateway receives configuration information from hosted service
- Off-line storage for data recovery
- Interfaces with wide variety of electric, gas, and water meters
- Site service information available with GE KV2C electric meter

Hosted software provides comprehensive energy management



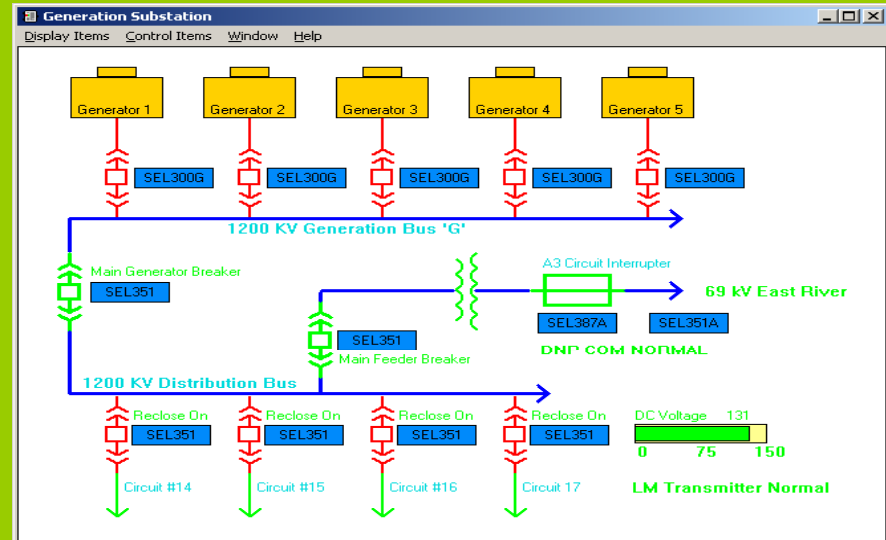
The screenshot shows a web browser window titled 'Internet Energy Systems, Inc. Meter Summary - Microsoft Internet Explorer'. The page features the company logo and a navigation bar with 'METERS' and 'LOGOUT'. The main content is a table titled 'Real-Time Meter Summary' with the following data:

Meter	Instant	5 Minute	15 Minute	Daily Usage	Daily Peak	Daily Peak Time	Monthly Peak	Peak Time	Monthly Total	Report Time
Madison Generation	78.8	78.8	77.2	1,203.2	107	Jan 16, 2008 12:00 PM	108.1	Dec 2, 2007 2:00 PM	22,283.7	Jan 16, 2008 4:50 PM

Below the table, there is contact information for Internet Energy Systems, Inc., including the website www.InternetEnergySystems.com and email Info@InternetEnergySystems.com. A copyright notice at the bottom states: 'Copyright © 2000-2005 Internet Energy Systems, Inc. All rights reserved. Privacy Statement. EnergyC3i, ECSS, C3iGateway, LiveGuard, PalmC3i, and EnergyC2 are trademarks of Internet Energy Systems, Inc.'

- Real-time monitoring of energy usage, power quality, demand control activities
- Alerting capability
- Storage and query of energy usage history
- Aggregation of multiple meters into single virtual meter
- Sophisticated load control

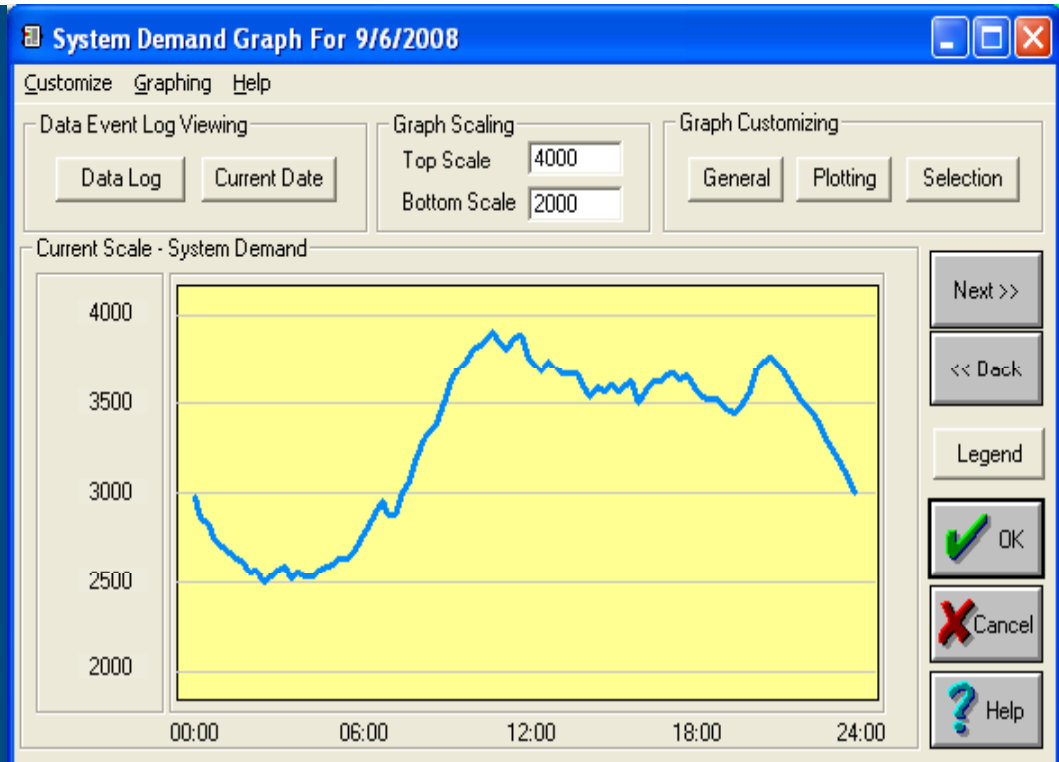
Specialization in Advanced Software



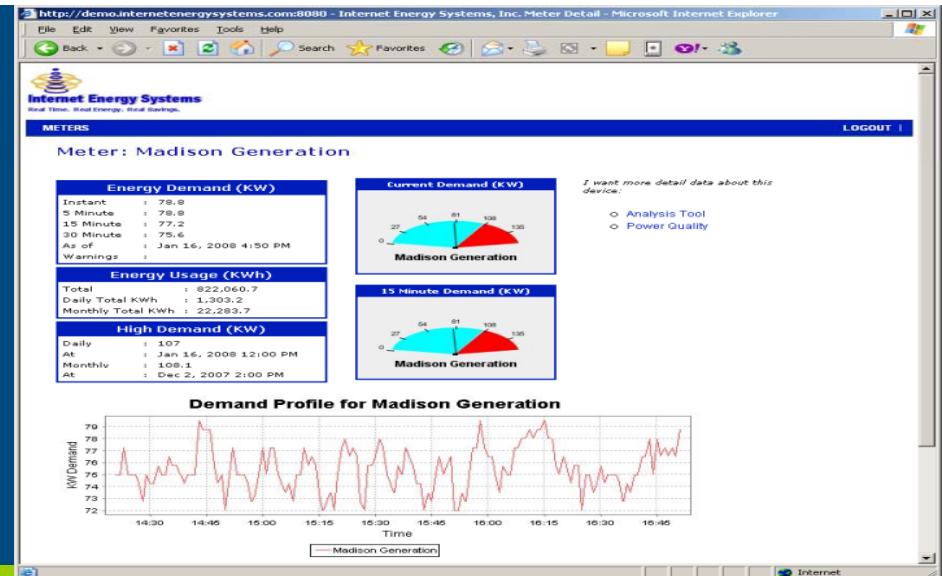
- Load management
- Advanced meter reading
- SCADA
- Custom software design
- Custom hardware design
- Contact us for your needs!

System Goals

- Monitor and profile load
- Provide high quality power
- Reduce labor costs
- Improve load factor
 - Reduce peak demand
 - Reduce transmission & generation costs
 - Provide energy conservation tools to your customers



Contact Information



- Omni-Pro Software/Internet Energy Systems
 - 23879 455th Avenue
Madison SD 57042
 - 605.256.3337
 - 605.270.2285
 - EMAIL omnipro@iw.net
 - www.internetenergysystems.com www.omni-pro.biz